

# SCIENTEX<sup>®</sup>

R A W A N G

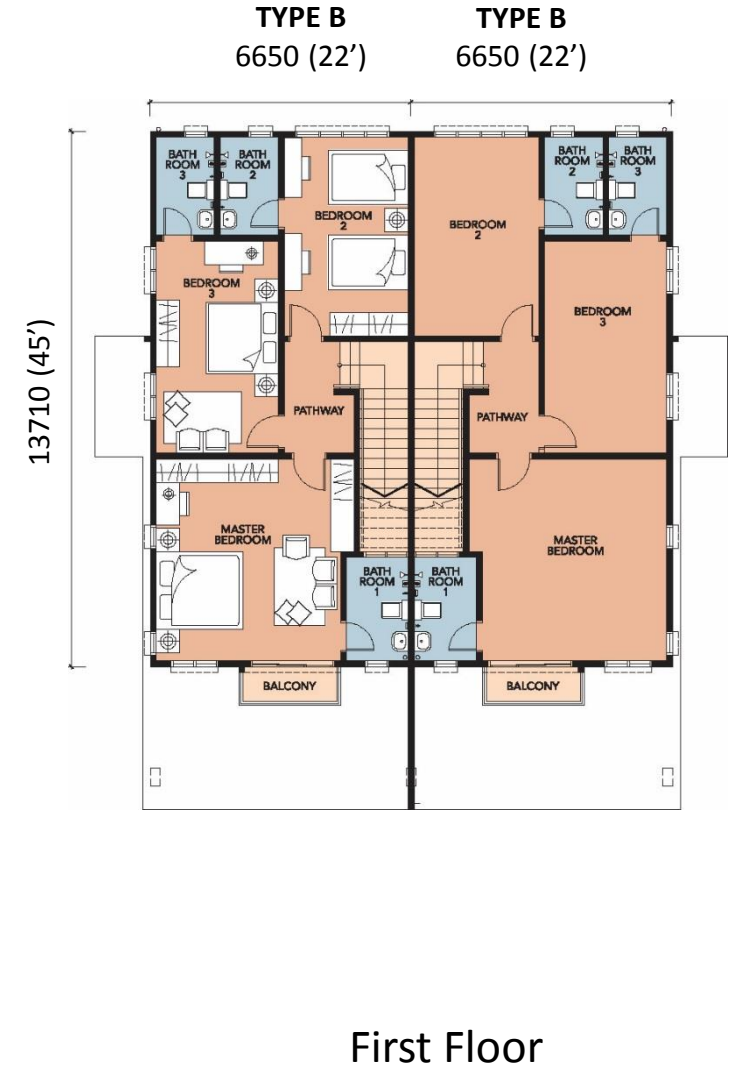
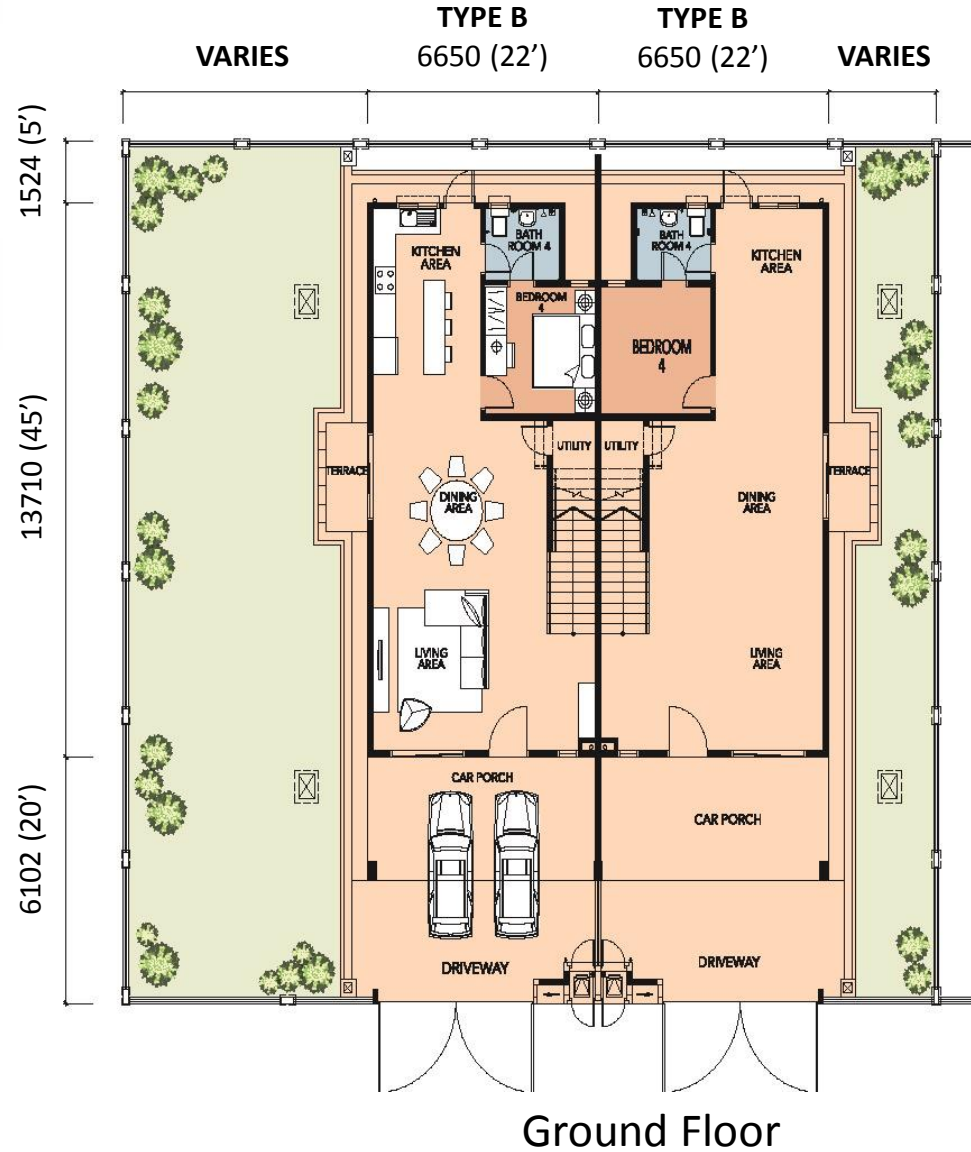
TAMAN SCIENTEX PARK



## DALIA

Double Storey Semi-D  
32' x 70'

Built-up Area: 2,223 sq ft



The information contained is subject to change and cannot form part of an offer or contract. All renderings are artist's impression only. While every reasonable care has taken in preparing this advertisement, the developer cannot be held responsible for any inaccuracy. All the above items are subject to variations, modifications & substitutions as may be required by Authorities or recommended by the Architect or Engineer.

SCIENTEX<sup>®</sup>  
healthy, friendly & happy ...