

**SCIENTEX**<sup>®</sup>  
JENJAROM



# Centrio Hub2

THE PERFECT PLACE FOR THRIVING GROWTH

成就商业腾飞的核心之地



Freehold | 永久地契

Open For Registration

Over **12,000** new residents in the catchment.  
a ready customer base in a 250-acre township.

2 Storey Shop Office  
22' x 70'



**New**  
Township  
Development



**High Return**  
Investment



**Freehold**



**Prime**  
Location



**Modern**  
Design



**Limited**  
unit



## A Vibrant Retail and Investment Hub for Modern Entrepreneurs

Position your business and investment in a thriving destination designed for visibility, growth, and long-term value.

Purposefully planned for retailers, F&B operators, and investors seeking sustainable returns, this premier retail hub offers exceptional exposure, steady footfall, and direct connection to a growing community.

事业与投资扎根于高曝光、人气旺、具成长潜力的核心地段。

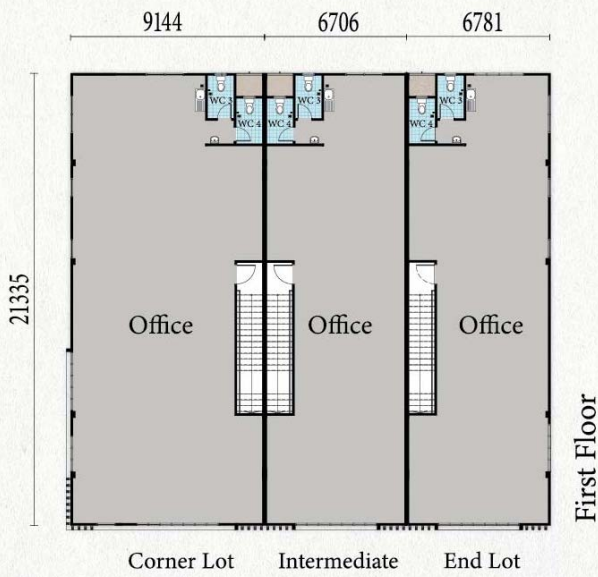
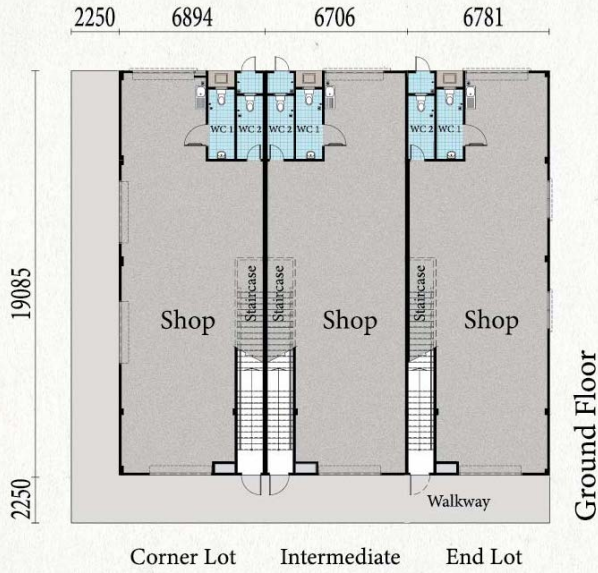
此优越商圈专为零售、餐饮与投资者打造，汇聚稳定人流，高曝光度，紧连不断成长的社区。



# Floor Plan

• Land Size: 22' x 70' | • Built Up: 3,080sq.ft.

Limited  
**50**  
units



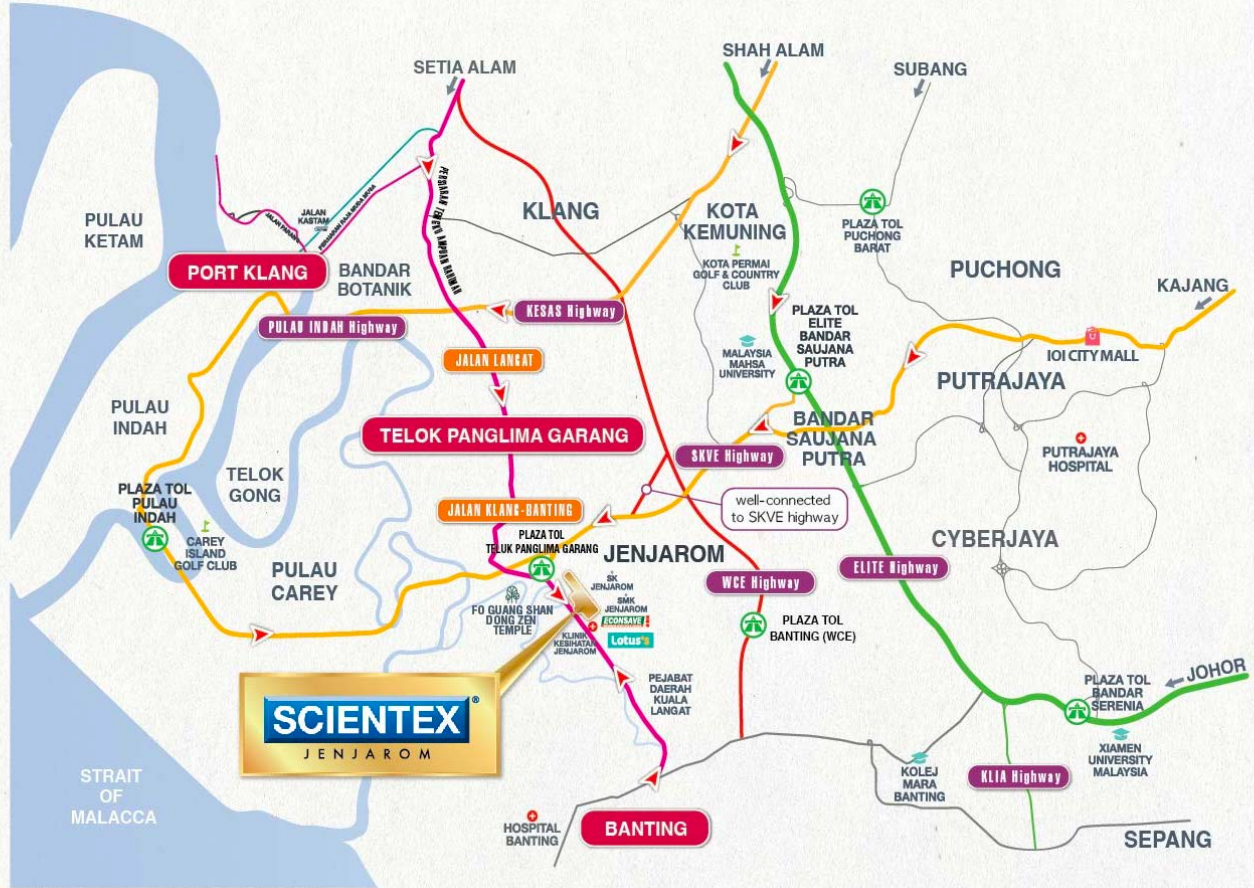
- Corner Lot (30' x 70')
- Intermediate Lot (22' x 70')
- End Lot (22' x 70')

# SCIENTEX<sup>®</sup>

JENJAROM



Highly Accessible via Major Highways  
**2KM** to **SKVE** Highway



(A Subsidiary of Scientex Berhad)  
**SCIENTEX JENJAROM SDN. BHD.** (170255-V)  
 Lot 421, Jalan Klang Banting, 42600 Jenjarom, Selangor.  
 Email: Jenjarom@scientex.com.my



**Award Winning Developer**



## 012-297 2596

[www.scientex.com.my](http://www.scientex.com.my)



Scan For Location Map

Sales Gallery Monday to Friday : 9am - 6pm  
 Open Daily Saturday, Sunday & Public Holiday : 10am - 6pm

**Scientex Jenjarom**  
 Sales Gallery

\* Risalah iklan ini merupakan jemputan dan pengenalan kepada pembeli berpotensi untuk mengetahui dengan lebih lanjut mengenai projek kami. Kontrak yang mengikat hanya akan wujud selepas penandatanganan Perjanjian Jual Beli yang ditetapkan antara pihak-pihak terlibat. 本广告宣传册仅作为对潜在购房者的邀请与项目简介, 旨在帮助您更深入地了解我们的发展项目。具有法律效力的合约, 仅限于双方签署指定的买卖合同 (Sale and Purchase Agreement)。